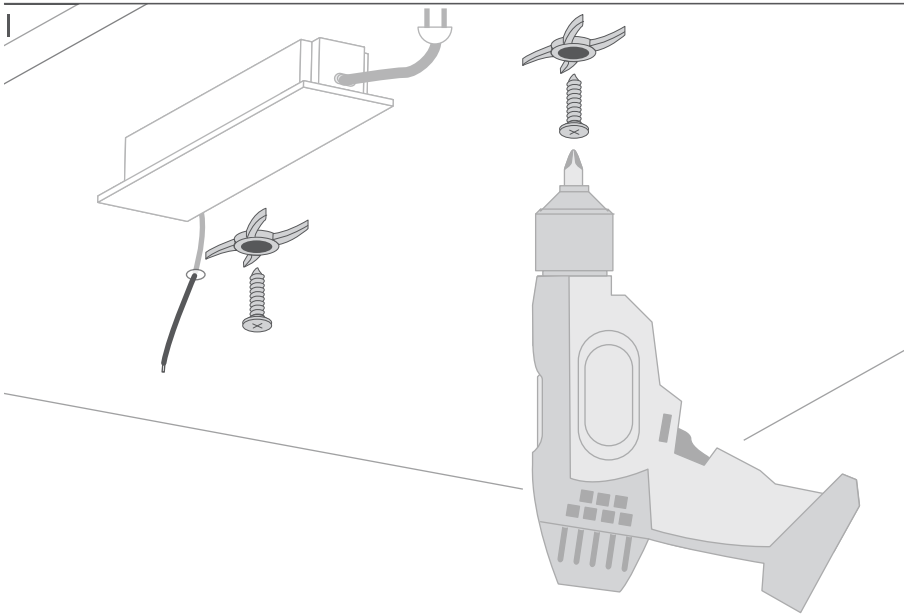


- 1. MICRO-HG extrusion (Ref. C1419)
- 2. Mounting bracket*
- 3. Countersunk screw (3 mm / 0.12")
- 4. LED strip*
- 5. Gland*
- 6. End cap*
- 7. Cover*
- 8. Power supply (12 V / 24 V)*

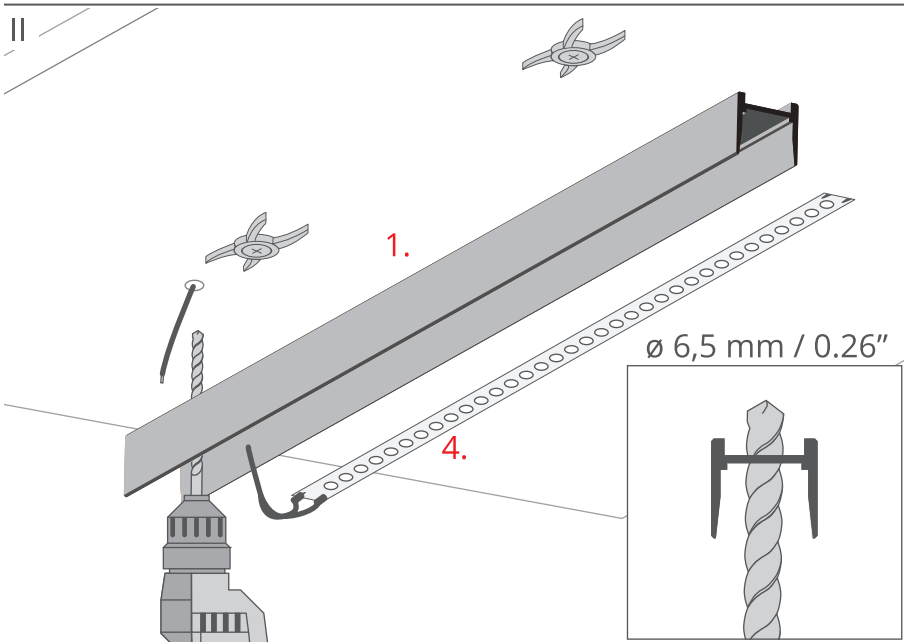
*The full range of accessories and electronics is available at www.KlusDesign.eu

NOTE! All LED strips must be connected to a 12 V or 24 V power supply.

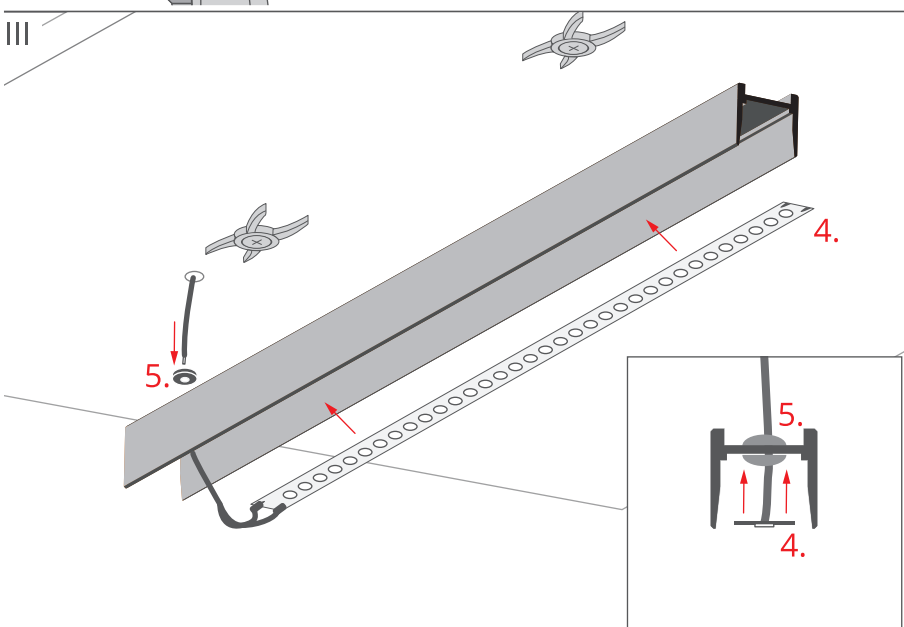
IMPORTANT: The instruction does not show all mounting options. Additional accessories related to the product along with mounting instructions are available at www.KlusDesign.eu. Drawings of extrusions and accessories in these instructions are simplified and only approximate the actual shapes.



Screw the mounting brackets (2) to the ceiling using the screws (3).

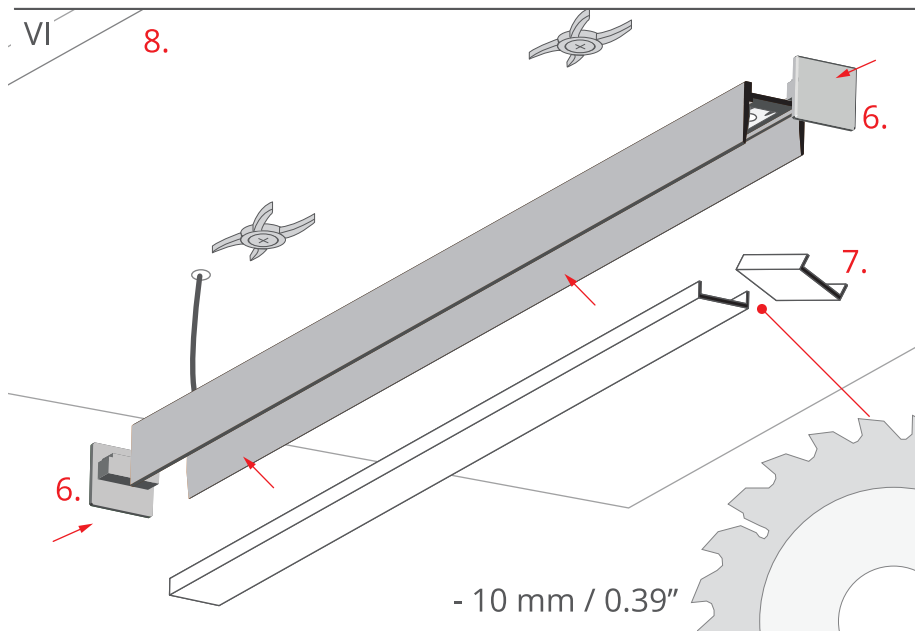


Drill a hole in the extrusion (1) to fit the gland and run the LED strip cable (4).



Adhere the LED strip (4) in the extrusion.

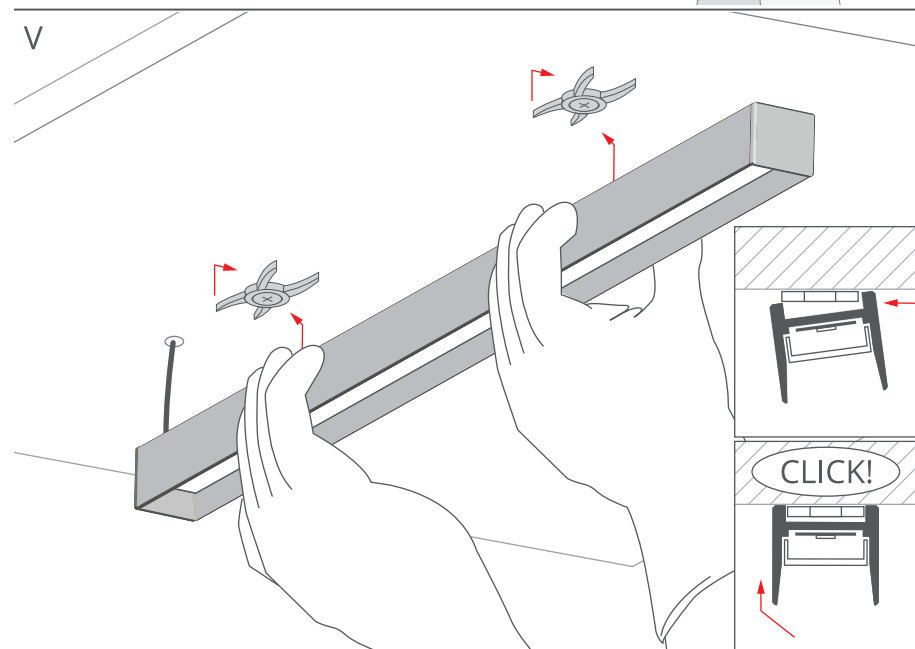
Fit the gland (5) in the drilled hole and pull the LED strip power cable through it.



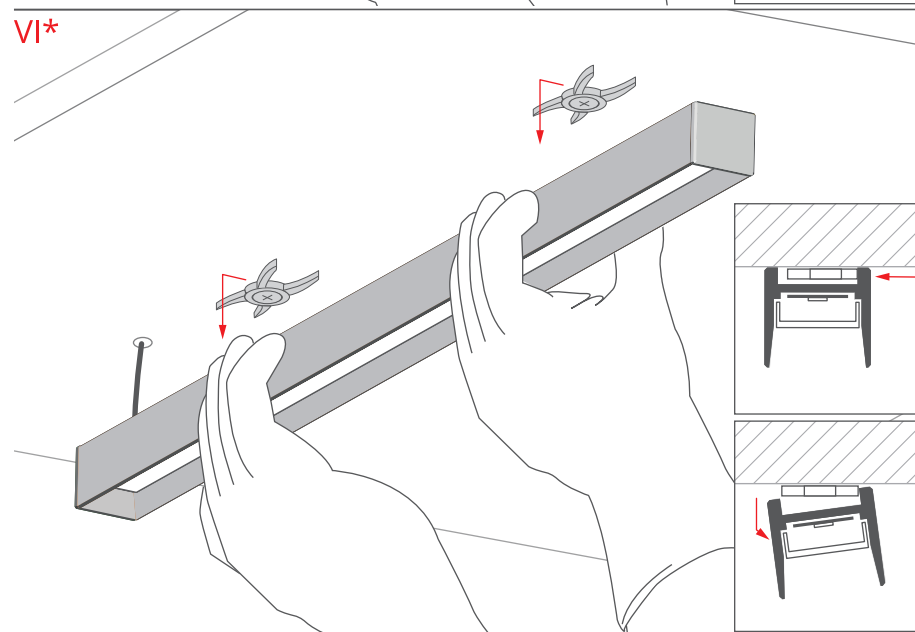
Cut the cover (7) so that it is 10 mm / 0.39" shorter than the extrusion

Attach the cover and the end caps (6).

Connect the power cable to the power supply 12 V / 24 V (8).



To properly place the fixture in the mounting brackets without damaging them, slightly tilt the extrusion, slide it from the side onto the mounting bracket, and then press it down until you hear a "click" (see Figure V).



***DETACHING**

To detach the lighting fixture without damaging the mounting brackets, slightly push it to the side and then tilt it.