

PRODUCT DESCRIPTION

- Thanks to its small size, it's a perfect match for the miniature KLUŚ profile
- You can quickly move the fastener anywhere relative to the profile
- You can set the fastener at any angle relative to the profile

Fill empty fields

Product nr.

Fixture type

Company

Job name

Date



TECHNICAL SPECIFICATION

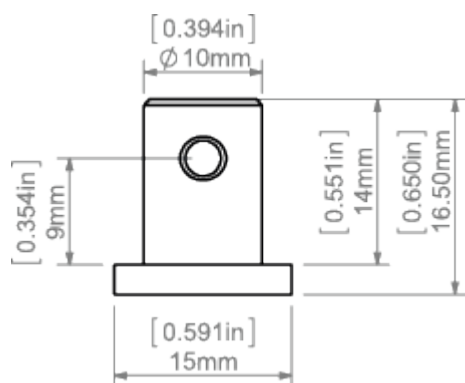
Application

- crosswise mounting of the profiles with the “small lock”

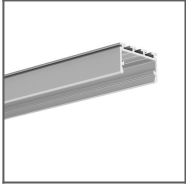
Assembly

- attached to the profile with the ZM nut and the pressure screw M3x6. Mounted to the surface with cables or rods

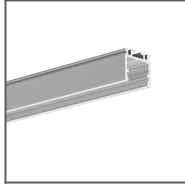
TECHNICAL DRAWING



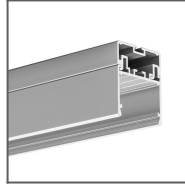
RELATED PROFILES



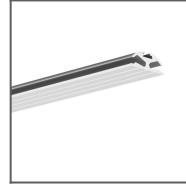
GIZA-LL profile
Ref: C0758



OPK-4 Profile
Ref: C0370



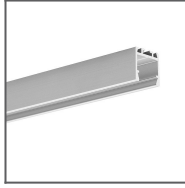
3035 Profile
Ref: 18039



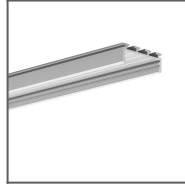
JAZ Profile
Ref: B8547



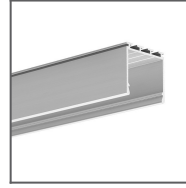
OLEK Profile
Ref: B8505



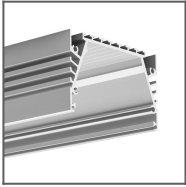
PDS-ZM Profile
Ref: B7696



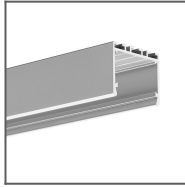
GIZA Profile
Ref: B5556



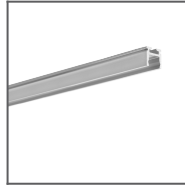
LIPOD Profile
Ref: B5554



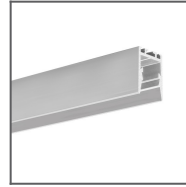
SEPOD Profile
Ref: B6593



3035-O Profile
Ref: B8441



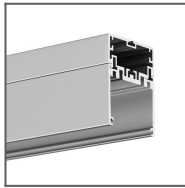
PIKO-ZM Profile
Ref: C1168



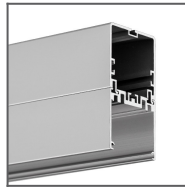
PDS-ZMG Profile
Ref: C1418



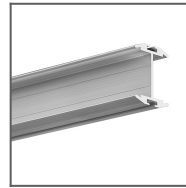
PDS-ZM-PLUS
Profile
Ref: C2056



4050 Profile
Ref: 18050



4050-W Profile
Ref: 18051



GIZA-DUO-LL
Profile
Ref: C2162

RELATED PRODUCTS

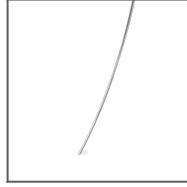
ACCESSORIES



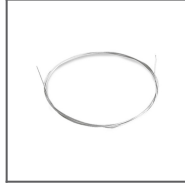
100 PUSZ brass
chrome Rod 1 m
Ref: 42518



Brass chrome FI-3
Rod 1m
Ref: 42501



Steel FI-3 Rod 53
cm
Ref: 1528



Steel wire FI-1 1m
Ref: 1397