

PRODUCT DESCRIPTION

Fastener with increased load capacity, used for hanging fixtures on a threaded, steel FI-3 ROD. In addition, it can be used as a connection for one pole of electricity as the steel cable with Cu core can be conductive. Attached to the extrusion with a screw through a drilled hole. The power cable can be inserted into the fastener through the hole in the screw head.

Fill empty fields

Product nr.

Fixture type

Company

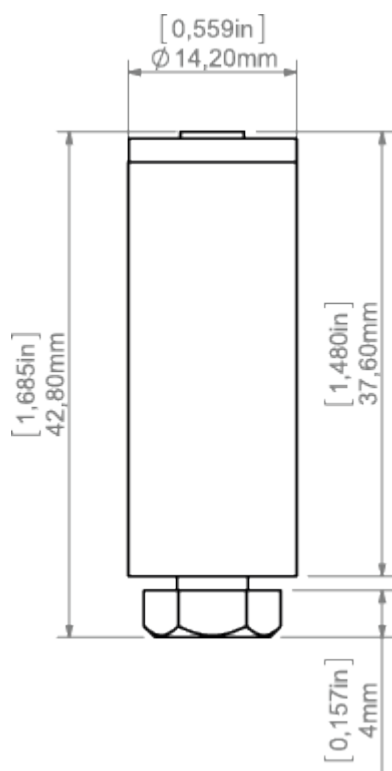
Job name

Date

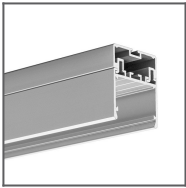


TECHNICAL SPECIFICATION

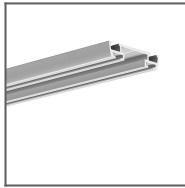
TECHNICAL DRAWING



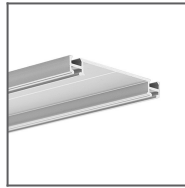
RELATED PROFILES



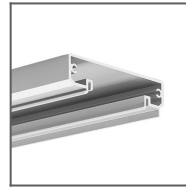
3035 Profile
Ref: 18039



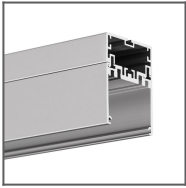
TEST-74 Profile
Ref: W4507



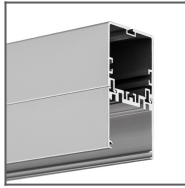
TETRA-78 Profile
Ref: W4508



TESPO Profile
Ref: 18020



4050 Profile
Ref: 18050



4050-W Profile
Ref: 18051

RELATED PRODUCTS

ACCESSORIES



100 PUSZ brass
chrome Rod 1 m
Ref: 42518