

## PRODUCT DESCRIPTION

Fastener with increased load capacity, used for hanging fixtures on a steel cable. In addition, it can be used as a connection for one pole of electricity as the [steel cable with Cu core](#) can be conductive. Mounted in the guide (small lock) of the selected profile. The power cable can be inserted through the hole drilled in the extrusion and further through the channel in the fastener

Fill empty fields

Product nr.

Fixture type

Company

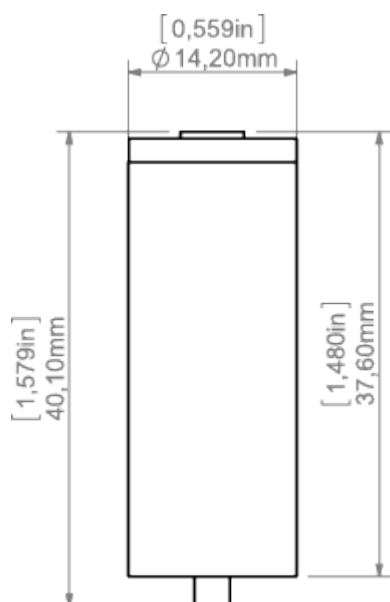
Job name

Date

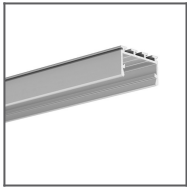


## TECHNICAL SPECIFICATION

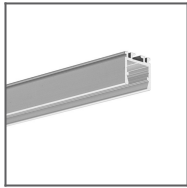
## TECHNICAL DRAWING



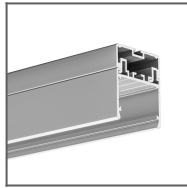
**RELATED PROFILES**



GIZA-LL profile  
Ref: C0758



OPK-4 Profile  
Ref: C0370



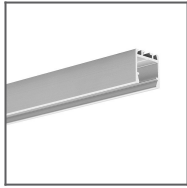
3035 Profile  
Ref: 18039



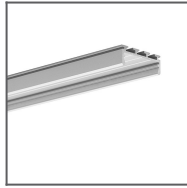
JAZ Profile  
Ref: B8547



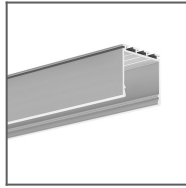
OLEK Profile  
Ref: B8505



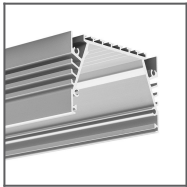
PDS-ZM Profile  
Ref: B7696



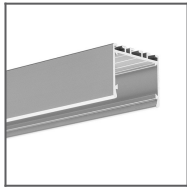
GIZA Profile  
Ref: B5556



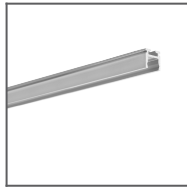
LIPOD Profile  
Ref: B5554



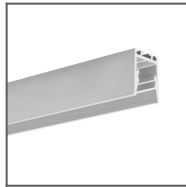
SEPOD Profile  
Ref: B6593



3035-O Profile  
Ref: B8441



PIKO-ZM Profile  
Ref: C1168



PDS-ZMG Profile  
Ref: C1418



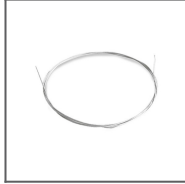
PDS-ZM-PLUS  
Profile  
Ref: C2056

## RELATED PRODUCTS

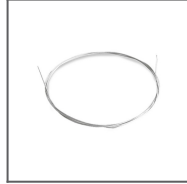
### ACCESSORIES



Isolated CU cable  
FI-1.35 mm  
Ref: 70310



Steel cable with  
Cu FI 0.95 mm  
core  
Ref: 70240



Steel wire FI-1 1m  
Ref: 1397