

**PRODUCT DESCRIPTION**

The hanger consists of two pieces with holes. Both parts should be inserted into the guide (large lock) of the selected extrusion. After insertion, they form a hanger that can be used to suspend the lighting fixture, by pulling e.g. a steel cable through it. To prevent the halves from moving in the guide, use the ZD BLOCK.

Fill empty fields

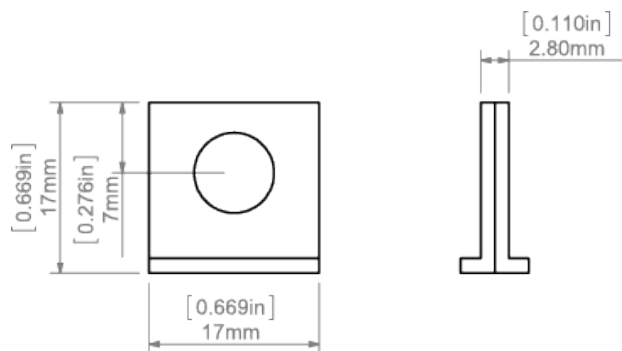
Product nr.

Fixture type

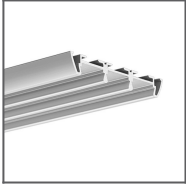
Company

Job name

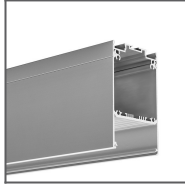
Date

**TECHNICAL SPECIFICATION****TECHNICAL DRAWING**

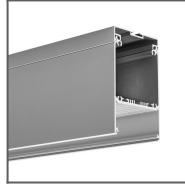
**RELATED PROFILES**



TRIADA Profile  
Ref: B4476



DES Profile  
Ref: 18030



GLADES Profile  
Ref: 18036

RELATED PRODUCTS

ACCESSORIES



Steel wire FI-1 1m  
Ref: 1397