

PRODUCT DESCRIPTION

Transverse conductive fastener, designed for attaching lighting fixtures to BOX profiles. It has a connection for one pole of electricity and a transverse hole for the FI-3 rod

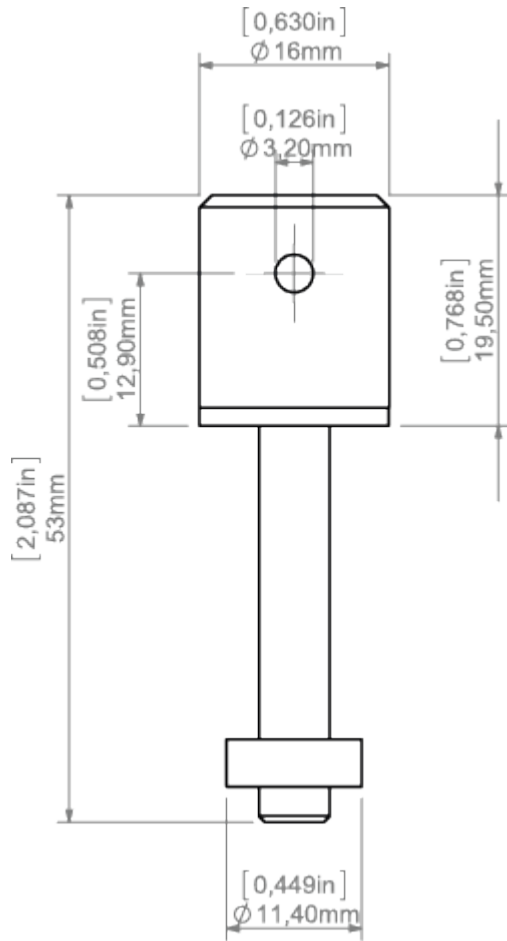
Fill empty fields

Product nr.
Fixture type
Company
Job name
Date

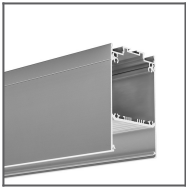


TECHNICAL SPECIFICATION

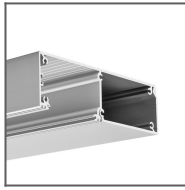
TECHNICAL DRAWING



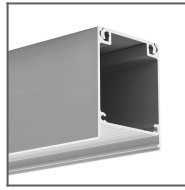
RELATED PROFILES



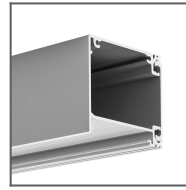
DES Profile
Ref: 18030



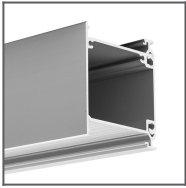
KIDES Profile
Ref: 18031



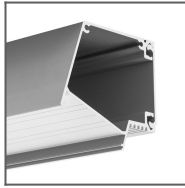
INTER Profile
Ref: 18011



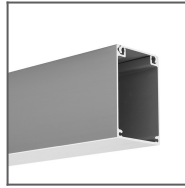
IKON Profile
Ref: 18013



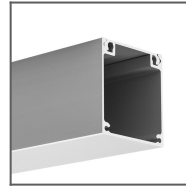
IDOL Profile
Ref: 18014



IMET Profile
Ref: 18012



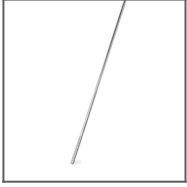
BOX Profile
Ref: 00640



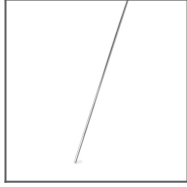
NIBO Profile
Ref: 18010

RELATED PRODUCTS

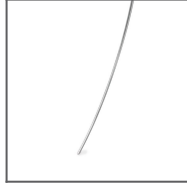
ACCESSORIES



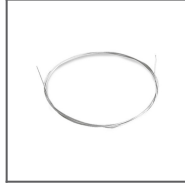
100 PUSZ brass
chrome Rod 1 m
Ref: 42518



Brass chrome FI-3
Rod 1m
Ref: 42501



Steel FI-3 Rod 53
cm
Ref: 1528



Steel cable with
Cu FI 0.95 mm
core
Ref: 70240



Steel wire FI-1 1m
Ref: 1397